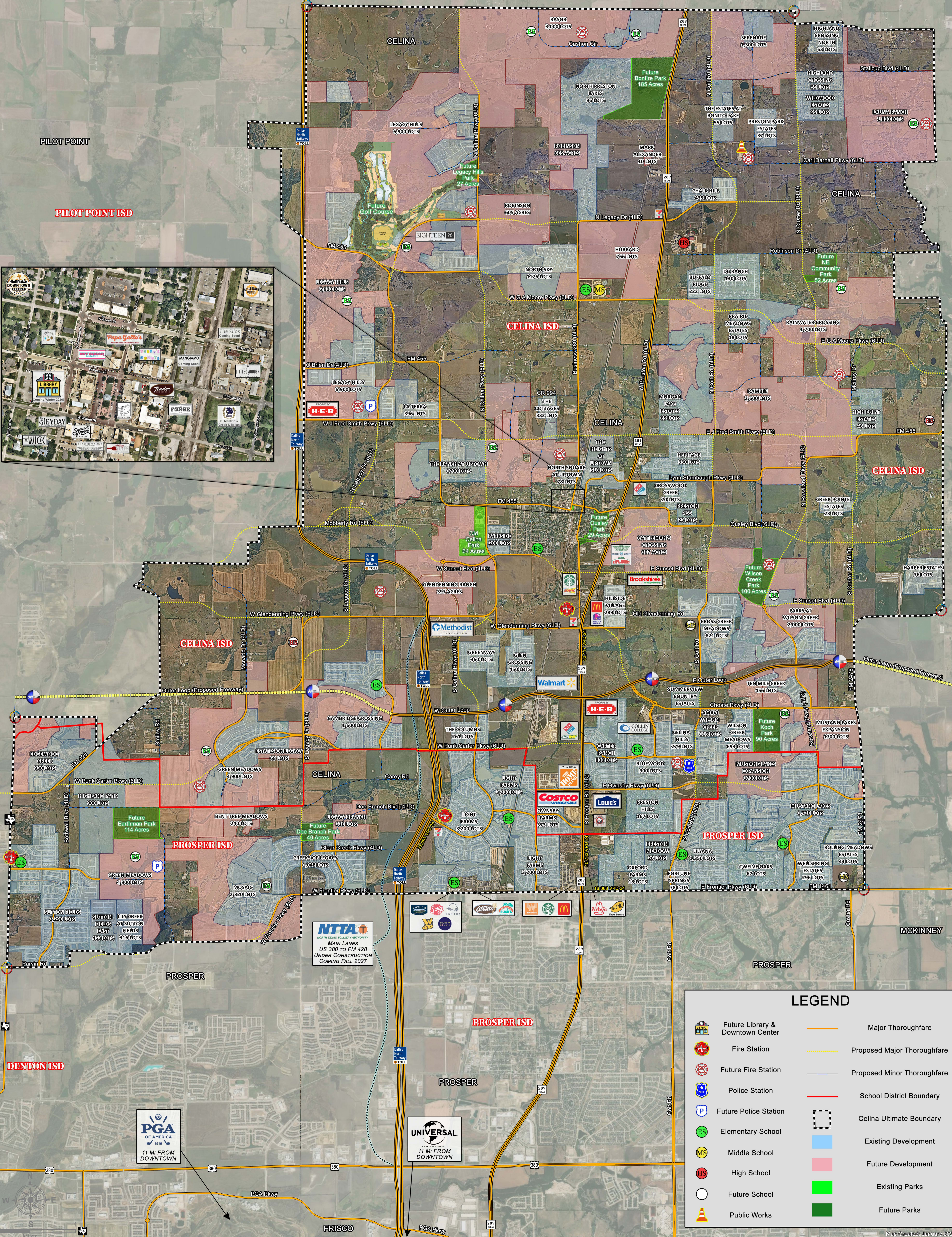


GUNTER ISD

PILOT POINT

PILOT POINT ISD



**NTTA**  
NORTH TEXAS TOLLWAY AUTHORITY  
MAIN LANES  
US 380 TO FM 428  
UNDER CONSTRUCTION  
COMING FALL 2027

**UNIVERSAL**  
11 MI FROM DOWNTOWN

**PGA**  
OF AMERICA  
1916  
11 MI FROM DOWNTOWN

LEGEND	
	Future Library & Downtown Center
	Fire Station
	Future Fire Station
	Police Station
	Future Police Station
	Elementary School
	Middle School
	High School
	Future School
	Public Works
	Major Thoroughfare
	Proposed Major Thoroughfare
	Proposed Minor Thoroughfare
	School District Boundary
	Celina Ultimate Boundary
	Existing Development
	Future Development
	Existing Parks
	Future Parks